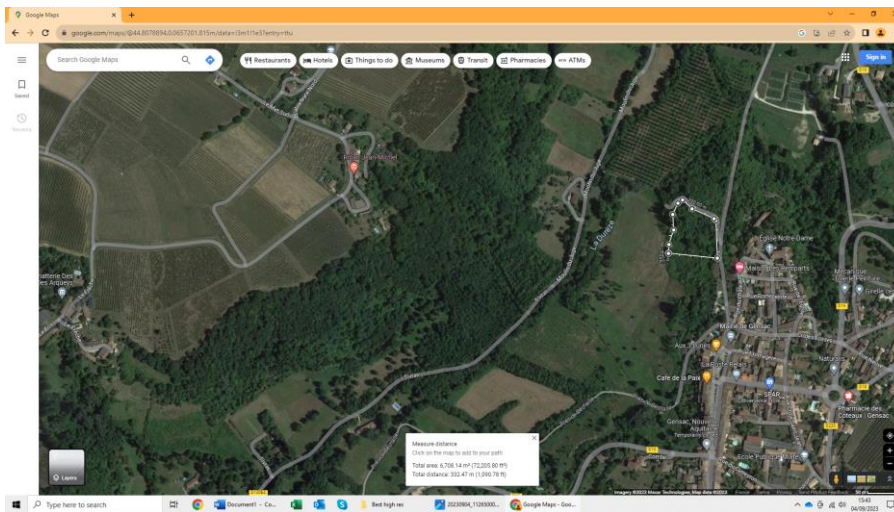


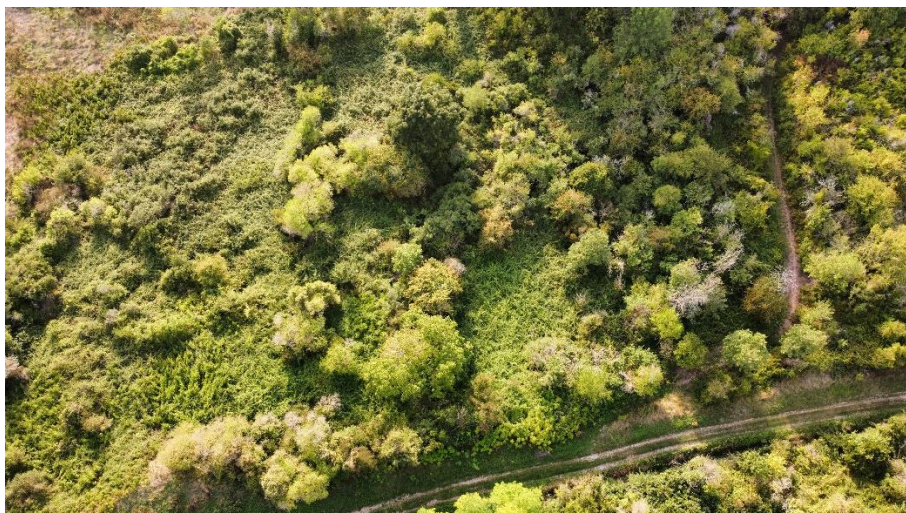
Project: Wildlife Garden

Boundary Definition.

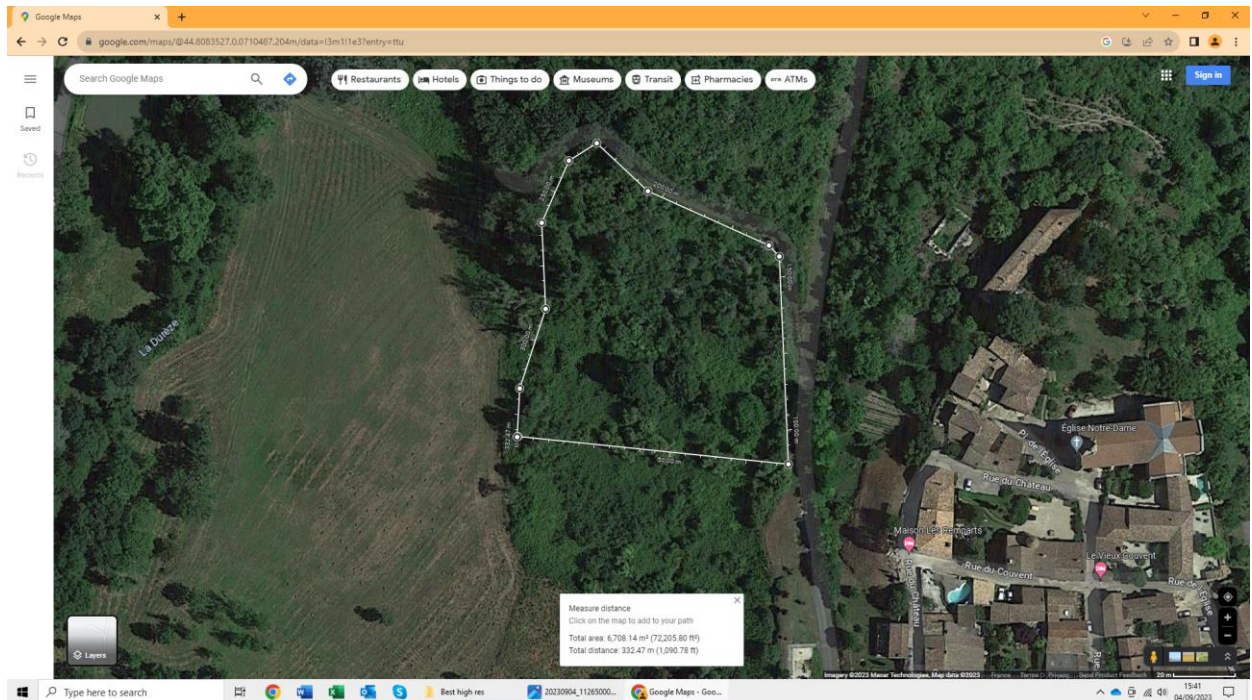
The land area is marked as 6,710m². General position as follows:



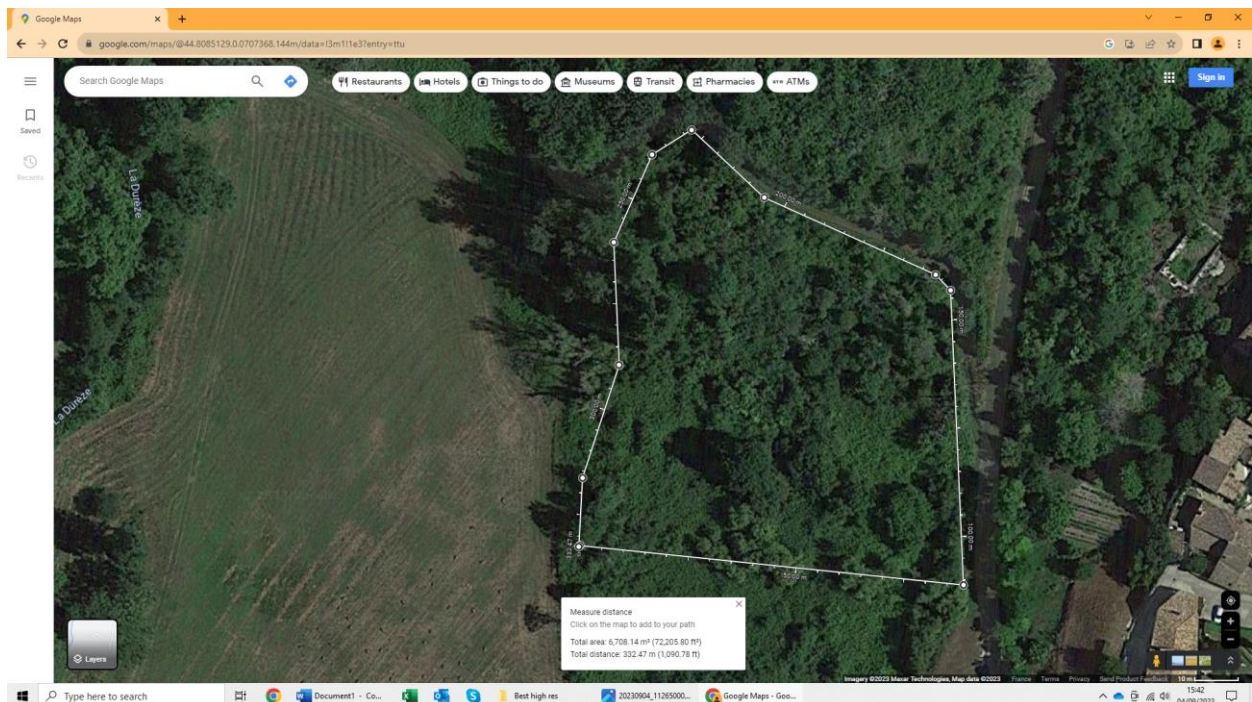
Drone shots from September 2023:



Exact layout of the land using Google maps where one is able to determine the area enclosed by a boundary making this fairly accurate:



The western and southern boundaries are not precisely determined but I shall put some signage on the trees marking the 'private property'. For the sake of running animals there will be no fences.



The following is from the DVF app marking the land:





The land from the west

Pictures from the past 100 years are taken from postcards



Overall Garden Design.



The pictures show Chateau de Chaumont wild garden made of a core network of paths and gardens which change representing the flowers on a plant; and Monty Don's Garden in Shrewsbury, UK which is more formally organised. The latter incorporates too much maintenance, and a looser structure will be deployed.

Existing Plants

Plum, Ash, Common dogwood, wild privet, drooping sedge, blackthorn, common hawthorn, lesser burdock, pygeum, spear thistle, dwarf elder, virginia creeper, common vervain

Summary

Objective: to create a haven for wildlife, particularly butterflies and bees.

Tasks for 2023: Basic infrastructure

1. Clear the scrubland (pay someone).
2. Identify the different areas of the land, damp, hot, etc.
3. Establish water connection.
4. Establish main arterial paths and water routes.
5. Plant trees.
6. Establish beehives.
7. Establish grid system / plan and publish it on website.
8. insurance

Immediate questions for the Mayor:

1. Water tank ok?
2. Is there a supply of water that could be diverted across the land
3. Limestone paths ok?
4. Bee keeping ok? Rules
5. Burning? Special day

Tasks for 2024 onwards: Creating Gardens

1. Establish a few of the gardens in Phase 1.

Implementation:

Converting 2 acres of scrubland into different gardens is a significant undertaking that involves several stages and activities. The amount of work involved can vary depending on the specific plans for the gardens and the existing condition of the land.

1. Planning and Design:
 - Conduct a site analysis to understand the soil quality, drainage, sunlight, and other site-specific factors.
 - Develop a master plan for the gardens, including layout, plant selections, pathways, and any structures like gazebos or sheds.
 - Obtain necessary permits and approvals if required by local authorities.
2. Clearing and Preparation:
 - Clear the scrubland of existing vegetation, rocks, and debris.
 - Grade the land as needed to create desired slopes and contours.
 - Improve soil quality through soil testing and amendments if necessary.
3. Infrastructure and Utilities:
 - Install irrigation systems to ensure proper watering of the gardens.
 - Set up any required utilities such as electricity or gas lines for lighting and equipment.
4. Hardscaping:
 - Build pathways, patios, and retaining walls if part of the garden design.
 - Install any desired garden structures, like pergolas or fences.
5. Planting:
 - Select and plant trees, shrubs, flowers, and other vegetation according to the garden design.
 - Pay attention to proper spacing, soil preparation, and watering requirements for each plant.
6. Maintenance:
 - Establish a regular maintenance routine, including weeding, pruning, and fertilizing.
 - Monitor and adjust the irrigation system as needed.
7. Special Features:
 - If there are specific features like ponds, water features, or sculpture installations, these will require their own design and installation processes.
8. Completion and Evaluation:
 - Review the gardens against the original design to ensure everything is in place.
 - Conduct soil tests and plant health assessments.
 - Make any necessary adjustments to the design or maintenance plan based on early results.

Clearing scrubland:

1. Protective Gear: Wear sturdy gloves, long-sleeved clothing, and thick trousers to protect yourself from thorns and stinging nettles.
2. Hand Tools:
 - Loppers: For cutting through thicker branches and brambles.
 - Pruning Shears: For smaller branches and nettles.
 - Garden Fork or Mattock: For digging up the roots.
 - Shovel: To help with digging and lifting.
3. Trash Bags or Bins: For collecting and disposing of the cleared vegetation.
4. Wheelbarrow: To transport tools and cleared debris.
5. Safety Glasses: To protect your eyes from debris.

Steps to Clear 2 Acres:

- Assessment: Walk through the area to assess the density of vegetation, identifying the worst areas with the most hawthorn, brambles, and nettles.
- Clearing: Start in a manageable section. Use loppers and pruning shears to cut down the hawthorn and brambles at their base. Be careful of thorns. Cut stinging nettles as close to the ground as possible.
- Root Removal: Use the garden fork or mattock to dig up the roots of the hawthorn and brambles. These can be quite extensive, so it might take some effort. Remove as much of the root system as possible to prevent regrowth.
- Collection: Place the cleared vegetation in trash bags or bins. Use a wheelbarrow to transport it away from the area or to a central collection point.
- Repeat: Continue this process throughout the 2 acres, working in sections. Take breaks to avoid fatigue and stay hydrated.
- Disposal: Depending on local regulations, you may need to arrange for disposal. You mentioned no fires, so consider options like composting or contacting your local waste disposal service.

Phases of garden creation:

- Water the garden during dry spells but aim for low maintenance.
- Let some areas grow wild to encourage wildlife.
- Mulch: Use organic mulch like wood chips to retain moisture and provide a habitat for beneficial insects.
- Avoid Pesticides: Refrain from using pesticides, as they can harm butterflies and their larvae.
- Maintenance: Regularly prune and deadhead plants to keep the garden healthy and blooming.

Phase 1 - 2024: Select 3 or 4 gardens to create from the following list;

1. Mediterranean Garden
2. Herb Garden
3. Wildflower Garden/ Meadow
4. Butterfly Garden
5. Cottage Garden
6. Christmas Garden

7. Sauvage Garden
8. Alpine Rock Garden
9. Secret Garden
10. Pollinator Garden
11. Bee-Friendly Garden
12. Winter Garden
13. Vineyard Garden
14. Fruit Garden
15. Tuscan Garden
16. Damp Garden
17. Coppice Garden
18. Rose Garden
19. Bluebell Wood
20. Spring Garden
21. Bulb Garden
22. Summer Garden
23. Sunflower Garden
24. Desert Garden
25. Writing Garden

Types of Gardens:

1. Xeriscape Garden (Drought-Tolerant):
 - Plants: Lavender, Agave, Sedum, Lavender Cotton, Blue Fescue Grass, Desert Marigold, Red Yucca, Silver Carpet
 - Planting Order: Group drought-tolerant plants together, mulch, and water deeply but infrequently. Planting Order: Cluster agave and yucca for architectural interest, scatter desert marigold, red yucca, and desert sage between them
2. Rock Garden:
 - Plants: Creeping Jenny, Creeping Thyme, Alpine Phlox
 - Planting Order: Place rocks strategically, plant ground covers between rocks.
3. Mediterranean Garden:
 - Plants: Rosemary, Olive Trees, Lavender, Bougainvillea, Cypress Trees
 - Planting Order: Plant herbs around trees, add gravel for drainage.
4. Succulent Garden:
 - Plants: Echeveria, Aloe Vera, Sempervivum
 - Planting Order: Space succulents apart, use well-draining soil.
5. Wildflower Meadow:
 - Plants: California Poppy, Black-Eyed Susan, Coneflower
 - Planting Order: Scatter wildflower seeds in the fall.
6. Fern Garden:
 - Plants: Lady Fern, Ostrich Fern, Maidenhair Fern
 - Planting Order: Plant ferns in shade with ample moisture.
8. Butterfly Garden:
 - Plants: Butterfly Bush, Milkweed, Lantana
 - Planting Order: Plant nectar-rich flowers in sunny spots.

10. Prairie Garden:
 - Plants: Purple Coneflower, Prairie Smoke, Big Bluestem Grass, Black-Eyed Susans, Butterfly Milkweed
 - Planting Order: Sow prairie grasses and wildflowers together.
11. Cactus Garden:
 - Plants: Barrel Cactus, Saguaro, Desert Marigold
 - Planting Order: Space cacti for proper growth, use sandy soil.
12. Herb Garden:
 - Plants: Basil, Thyme, Sage, Rosemary
 - Planting Order: Plant herbs in raised beds or pots.
13. Fruit Orchard:
 - Plants: Apple Trees, Blueberry Bushes, Raspberry Canes
 - Planting Order: Space trees and bushes according to their size.
14. Evergreen Garden:
 - Plants: Juniper, Boxwood, Arborvitae
 - Planting Order: Arrange evergreens for year-round greenery.
15. Low-Maintenance Perennial Garden:
 - Plants: Daylilies, Hostas, Russian Sage
 - Planting Order: Mix perennials for continuous blooms.
16. Shade Garden:
 - Plants: Hostas, Ferns, Bleeding Heart
 - Planting Order: Plant shade-loving plants in cool, damp areas.
17. Tropical Garden:
 - Plants: Banana Trees, Hibiscus, Bird of Paradise, orchids
 - Planting Order: Use well-draining soil, provide ample humidity. Planting Order: Start with banana trees as a backdrop, plant hibiscus and plumeria for colour, and place bird of paradise and croton in the foreground.
18. Palm Garden:
 - Plants: Various Palm Species
 - Planting Order: Space palm trees adequately for growth.
19. Bee-Friendly Garden:
 - Plants: Lavender, Bee Balm, Echinacea
 - Planting Order: Plant in clusters to attract pollinators.
20. Rose Garden:
 - Plants: Roses (various varieties), Lavender, Boxwood, Hydrangeas, Delphiniums
 - Planting Order: Start with roses in the centre, surrounded by lavender, boxwood as borders, and peonies and delphiniums at the outer edges.
21. Vegetable Garden:
 - Plants: Tomatoes, Cucumbers, Bell Peppers, Zucchini, Carrots
22. English Cottage Garden:
 - Plants: Daisies, Foxgloves, Hollyhocks, Sweet Peas, Lupines, Peonies, Snapdragons, Shasta Daisies, Lilacs, Sweet William

- Planting Order: Mix hollyhocks, foxgloves, and daisies for height, plant sweet peas along a trellis, and border with lavender.
23. Desert Garden:
 - Plants: Agave, Cacti (various types), Yucca, Desert Marigold, Joshua Trees
 24. Butterfly Garden:
 - Plants: Milkweed, Lantana, Coneflowers, Butterfly Bush, Black-Eyed Susans
 25. Rock Garden:
 - Plants: Alpine Phlox, Stonecrop, Creeping Jenny, Blue Star Creeper, Hens and Chicks
 26. Water Garden:
 - Plants: Water Lilies, Lotus, Pickerel Rush, Papyrus, Water Hyacinth
 27. Wildlife Garden:
 - Plants: Native Wildflowers, Milkweed, Oak Trees, Elderberry Bushes, Berry-Bearing Shrubs
 28. Woodland Garden:
 - Plants: Ferns, Hostas, Bleeding Hearts, Trillium, Virginia Bluebells
 29. Alpine Garden:
 - Plants: Saxifrage, Alpine Phlox, Edelweiss, Lewisia, Alpine Rock Jasmine
 30. Bog Garden:
 - Plants: Pitcher Plants, Venus Flytrap, Bog Rosemary, Water Sedge, Marsh Marigold
 31. Shade Garden:
 - Plants: Hostas, Ferns, Bleeding Hearts, Astilbe, Japanese Forest Grass
 32. Therapeutic Garden
 - Therapeutic gardens focus on calming scents like lavender and chamomile, while emphasizing beauty and a diverse selection of colourful flowers and plants.

Plants, trees, and hedges mentioned in ZPP for Zone 3:

The plantations will use the following species; sycamore maples, ash, cherry, chestnut, hornbeam, hazel, alder, locust, atrovirian privet, Chinese privets, tin laurels and eleagnus.

Plantations may occasionally use local species with slower growth such as pubescent oak, sessile oak, pedunculate oak, holm oak, country maple, country elm, horse chestnut, common ash, walnut or beech.

The next section looks in more detail looking at garden layout and design.

Mediterranean garden

1. Plant Selection:

- Olive Trees: Plant 2-3 olive trees. They are iconic in Mediterranean gardens.
- Lavender: Plant lavender along pathways for a fragrant touch.
- Rosemary: Use rosemary as a low hedge or in pots for easy maintenance.
- Sage: Add sage for its silvery foliage and culinary uses.
- Thyme: Ground cover with creeping thyme for a lush carpet.
- Agave: A focal point plant, drought-tolerant and low-maintenance.
- Bougainvillea: For vibrant color, grow it along walls or trellises.
- Cypress Trees: Plant a few cypress trees for vertical interest.
- Citrus Trees: Consider lemon or orange trees for fruit and fragrance.
- Mediterranean Fan Palm: Adds an exotic touch to your garden.
- Mint: Plant mint in pots to control its growth.
- Geraniums: Hardy and colorful, great for pots or borders.
- Cacti and Succulents: Group them for a desert vibe.
- Aloe Vera: Low-maintenance and useful for skincare.
- Jasmine: Climbing jasmine for aromatic archways.
- Oregano: Another culinary herb for ground cover.
- Basil: Keep basil in pots for easy access to fresh herbs.
- Ivy: Use ivy to cover walls or create green privacy screens.
- Pampas Grass: For texture and movement in the garden.
- Russian Sage: Drought-tolerant with lovely purple flowers.

2. Layout and Design:

- Create meandering pathways using gravel or stone.
- Add a central focal point, like a decorative fountain or statue.
- Install a pergola covered with grapevines for shade.
- Use terracotta pots and containers for a rustic feel.
- Incorporate a seating area with wrought iron furniture.
- Group plants with similar water needs together.
- Leave some areas with natural mulch for low-maintenance.
- Consider raised beds for vegetables and herbs.

3. Maintenance Tips:

- Install a drip irrigation system to conserve water.
- Mulch beds to retain moisture and reduce weeds.
- Prune and trim plants as needed to maintain shape.
- Fertilize sparingly, as Mediterranean plants prefer lean soil.
- Monitor for pests and address issues promptly.
- Regularly harvest herbs for culinary use.
- Sweep paths and clean furniture regularly.
- Adjust watering based on the season and rainfall.

Herb Garden

1. Define Garden Zones: Divide your garden into sections for different types of plants (herbs, trees, hedges).

2. Herb Garden (40% of space):

- Allocate 40 square meters to your herb garden.
- Plant herbs in raised beds or containers for easy maintenance.
- Consider grouping herbs with similar water and sun requirements together.

3. Tree Area (30% of space):

- Dedicate 30 square meters to trees.
- Opt for native, low-maintenance trees like apple, pear, or cherry.

4. Hedge Boundary (30% of space):

- Create a natural boundary using low-maintenance hedge plants.
- Suggested hedge plants: Boxwood, yew, or lavender.

5. Plant Suggestions for Herb Garden:

- **Basil:** Easy to grow and versatile in the kitchen.
- **Mint:** Plant in containers to prevent spreading.
- **Rosemary:** Drought-tolerant and fragrant.
- **Thyme:** Requires little care and adds flavor to dishes.
- **Chives:** Hardy and great for garnishing.
- **Oregano:** Thrives in well-drained soil.
- **Sage:** Low maintenance and a culinary favorite.
- **Parsley:** Plant as a border plant; it's biennial.
- **Lemon Balm:** Attracts pollinators and has a pleasant aroma.
- **Dill:** Self-seeding, so minimal replanting required.
- **Cilantro:** Grow in partial shade to extend its life.
- **Lavender:** Fragrant and drought-resistant.
- **Fennel:** Plant separately; it can be invasive.
- **Tarragon:** Needs little care and enhances flavors.
- **Marjoram:** Thrives in well-drained, sandy soil.
- **Lemon Verbena:** Fragrant and low-maintenance.
- **Catnip:** Attracts beneficial insects and cats.
- **Coriander:** Plant in the shade during hot summers.
- **Lovage:** Requires minimal attention once established.
- **Chamomile:** Grows well in full sun and has many uses.

6. Maintenance Tips:

- Mulch around plants to retain moisture and reduce weeds.
- Install a drip irrigation system to conserve water.
- Prune herbs regularly to encourage bushier growth.
- Fertilize herbs sparingly; they prefer lean soil.
- Monitor for pests and address issues promptly.
- Regularly trim and shape hedges.
- Water trees deeply but infrequently to encourage deep root growth.

Wildflower garden

1. Central Meadow (60% of the area): This will be the heart of your wildflower garden, filled with native wildflowers and grasses.
2. Tree Area (20% of the area): Plant a variety of trees to add height and provide habitat for wildlife.
3. Hedge Borders (10% of the area): Surround the garden with native hedges to create structure and attract birds.
4. Pathways and Seating (10% of the area): Add winding pathways and a small seating area to enjoy your garden.

5. Plant Suggestions:

- Wildflowers for Central Meadow:
- Purple Coneflower (*Echinacea purpurea*)
- Black-Eyed Susan (*Rudbeckia hirta*)
- Butterfly Weed (*Asclepias tuberosa*)
- Bluebonnet (*Lupinus spp.*)
- Wild Lupine (*Lupinus perennis*)
- Blanket Flower (*Gaillardia spp.*)
- Coreopsis (*Coreopsis spp.*)
- Indian Paintbrush (*Castilleja spp.*)
- Oxeye Daisy (*Leucanthemum vulgare*)
- Meadow Foxtail Grass (*Alopecurus pratensis*)

Trees for Tree Area:

- Oak (*Quercus spp.*)
- Maple (*Acer spp.*)
- Birch (*Betula spp.*)
- Dogwood (*Cornus spp.*)
- Hawthorn (*Crataegus spp.*)

Hedge Plants:

- Common Privet (*Ligustrum vulgare*)
- Hornbeam (*Carpinus spp.*)
- Blackthorn (*Prunus spinosa*)
- Hazel (*Corylus avellana*)
- Hawthorn (*Crataegus monogyna*)

Pathway Border and Seating Area:

- Lavender (*Lavandula spp.*)
- Rosemary (*Rosmarinus officinalis*)
- Thyme (*Thymus spp.*)
- Echinops (*Echinops ritro*)
- Sedum (*Sedum spp.*)

6. Planting Tips:

- Plant in clusters or drifts for a natural look.

Butterfly garden

1. Entryway: Create a welcoming entrance with a pergola or arch covered in flowering vines like honeysuckle or clematis.
 2. Butterfly Path: Design a winding path through the garden to allow for easy viewing of butterflies.
 3. Central Seating Area: Place a bench or seating area in the center to relax and observe butterflies.
 4. Butterfly Feeding Station: Include a shallow butterfly puddling area with wet sand and rocks for essential minerals.
 5. Butterfly Habitat: Plant native trees and shrubs around the perimeter to provide shelter and nesting sites.
 6. Nectar Plants: Fill the garden with nectar-rich plants to attract butterflies:
 - Butterfly Bush (Buddleja)
 - Coneflowers (Echinacea)
 - Lantana
 - Black-Eyed Susan (Rudbeckia)
 - Verbena
 - Zinnias
 - Milkweed (for Monarchs)
 - Salvia, Joe-Pye Weed (Eutrochium)
 7. Host Plants: Include host plants for butterfly larvae:
 - Milkweed (for Monarchs)
 - Parsley (for Swallowtails)
 - Dill (for Black Swallowtails)
 - Fennel (for Swallowtails)
 - Citrus trees (for Gulf Fritillary)
 8. Ground Cover: Plant low-growing ground covers like creeping thyme or ajuga for butterflies to rest on.
 9. Butterfly-Friendly Trees:
 - Flowering Dogwood
 - Redbud
 - Eastern Red Cedar (*Juniperus virginiana*)
 10. Butterfly-Friendly Shrubs:
 - Spicebush (*Lindera benzoin*)
 - Buttonbush (*Cephalanthus occidentalis*)
 - Viburnum
- Other points
- Colourful Flowers: Choose a variety of flower colours to attract a diverse range of butterflies.
 - Butterfly-friendly Herbs: Plant herbs like oregano, thyme, and basil, which butterflies love.
 - Water Feature: Install a small pond or birdbath to provide a water source for butterflies.
 - Butterfly Houses: Add butterfly houses for shelter and nesting opportunities.

Cottage garden

Layout Plan:

- Entry Arbor: Start with an inviting arbor at the entrance with climbing roses or clematis.
- Pathway: Create a winding gravel pathway through the garden for a charming, rustic feel.
- Central Garden Bed: In the center of the garden, create a circular garden bed.
- Trees: Plant a small ornamental tree like a crabapple or flowering cherry in the center.
- Shrubs/Hedges: Around the central bed, create a low hedge of boxwood or lavender for definition.
- Perennials for Central Bed: Fill the central bed with a mix of perennial flowers like:
 - English Roses
 - Delphiniums
 - Peonies
 - Foxgloves
 - Iris
 - Lupines
 - Alliums
- Other points
 - Climbing Plants: Along fences and trellises, plant climbing roses, wisteria, or honeysuckle.
 - Herb Garden: Dedicate a corner for a small herb garden with rosemary, thyme, and basil.
 - Vegetable Patch: Include a small vegetable patch with tomatoes, beans, and lettuce.
 - Patio Area: Set up a cozy seating area with potted geraniums and hanging baskets.
 - Pond or Water Feature: Consider a small pond with water lilies and marginal aquatic plants.
 - Dwarf Fruit Trees: Plant dwarf apple or pear trees along one edge of the garden.
 - Daisy Border: Create a border with Shasta daisies for a classic cottage garden look.
 - Wildflowers: Allow a corner to go wild with native wildflowers for a natural touch.
 - Butterfly Bush: Include a butterfly bush to attract pollinators.
 - Pathside Plants: Border the pathway with low-growing plants like alyssum, creeping thyme, and campanula.
 - Rockery: Incorporate a small rockery with alpine plants.
 - Fragrant Herbs: Plant fragrant herbs like lavender and chamomile near seating areas.
 - Cottage Garden Bench: Place a charming bench or swing for relaxation.
 - Birdhouse and Feeder: Hang a birdhouse and set up a bird feeder to attract feathered friends.

Christmas garden

Trees:

- Norway Spruce (*Picea abies*): A classic Christmas tree.
- Blue Spruce (*Picea pungens*): Known for its striking blue color.
- Douglas Fir (*Pseudotsuga menziesii*): A popular Christmas tree with soft needles.

Shrubs and Hedges:

- Holly (*Ilex aquifolium*): Iconic for its red berries and green leaves.
- Boxwood (*Buxus sempervirens*): Creates a neat, evergreen hedge.
- Juniper (*Juniperus communis*): Adds texture and color variety.
- Euonymus (*Euonymus fortunei*): Provides year-round interest.

Perennials and Groundcover:

- Poinsettia (*Euphorbia pulcherrima*): Classic Christmas plant.
- Christmas Rose (*Helleborus niger*): Blooms in winter.
- Cyclamen (*Cyclamen* spp.): Beautiful winter-flowering option.
- Snowdrops (*Galanthus* spp.): Early-blooming bulbs.
- Winterberry (*Ilex verticillata*): Attractive red berries in winter.

Evergreen Grasses:

- Fountain Grass (*Pennisetum alopecuroides*): Adds movement and texture.
- Blue Fescue (*Festuca glauca*): Offers a cool blue hue.

Groundcover and Spreading Plants:

- Creeping Jenny (*Lysimachia nummularia*): Trailing greenery.
- Ivy (*Hedera* spp.): Clings to walls or drapes over structures.
- Mistletoe; White berries

Flowering Shrubs:

- Camellia (*Camellia japonica*): Adds winter blooms.
- Witch Hazel (*Hamamelis* spp.): Fragrant winter flowers.
- Winter Jasmine (*Jasminum nudiflorum*): Yellow blooms in winter.
- Christmas Campanula (*Campanula poscharskyana*): Delicate blue or white flowers; Cottonesta

Garden Layout:

- Central Christmas Tree: Place the main Christmas tree as a focal point in the center.
- Evergreen Borders: Surround the garden with a mix of holly, boxwood, and juniper for a lush, green backdrop.
- Pathways: Create winding pathways using gravel or stepping stones for easy access.
- Flowerbeds: Along the pathways, plant flowerbeds with perennials like cyclamen, snowdrops, and hellebores.
- Shrub Islands: Place groups of camellias, witch hazels, and winter jasmine strategically around the garden.

- Groundcover Splashes: Add patches of creeping Jenny and ivy to fill in spaces and provide ground cover.
- Decorations: Hang decorative lights, ornaments, and wreaths on trees and shrubs for a festive touch.
- Seating Area: Include a cozy seating area with outdoor furniture where you can enjoy the garden's beauty.
- Mulch and Gravel: Use mulch around plants and gravel on pathways for a neat and tidy appearance.
- Winterberry Accents: Place winterberry shrubs near the entrance for their vibrant red berries.

Sauvage garden

- Native Grasses: Plant 30 square meters with native grasses like *Festuca glauca* (Blue Fescue) for a soft, blue-green colour. Plant in spring.
- Butterfly Bush (*Buddleja davidii*): Place this shrub in a sunny spot, reaching up to 3 meters in height with purple or white blooms. Plant in early spring.
- Coneflowers (*Echinacea purpurea*): These perennials have purple or pink blooms and grow up to 1.2 meters tall. Plant in spring or fall.
- Black-Eyed Susan (*Rudbeckia hirta*): Yellow or orange blooms, perfect for late summer. Plant in spring.
- Lavender (*Lavandula angustifolia*): Fragrant and low-maintenance, plant in well-draining soil in early spring.
- Yarrow (*Achillea millefolium*): White or yellow blooms, drought-tolerant. Plant in spring.
- Daylilies (*Hemerocallis*): Various colours, minimal care required. Plant in early spring.
- Russian Sage (*Perovskia atriplicifolia*): Silver-gray foliage with purple flowers, plant in spring.
- Creeping Thyme (*Thymus serpyllum*): Low-growing, with purple or pink flowers. Plant in early spring.
- Sedum (*Sedum spectabile*): Succulent ground cover with pink or white flowers. Plant in spring.
- Redtwig Dogwood (*Cornus sericea*): Shrub with red branches, plant in early spring.
- Witch Hazel (*Hamamelis virginiana*): Fragrant yellow or red blooms in late winter. Plant in early spring.
- Salvia (*Salvia nemorosa*): Purple, blue, or pink spikes of flowers. Plant in spring.
- *Autumn Joy Sedum (*Sedum spectabile* 'Autumn Joy'): Pink flowers that turn copper in fall. Plant in spring.
- *Blue Star (*Amsonia tabernaemontana*): Blue flowers in spring, yellow foliage in fall. Plant in spring.
- Euphorbia (*Euphorbia polychroma*): Yellow-green flowers in spring, green foliage. Plant in early spring.
- Meadow Rue (*Thalictrum aquilegifolium*): Delicate purple flowers, plant in spring.
- Jacob's Ladder (*Polemonium caeruleum*): Blue or white flowers, plant in spring.
- Columbine (*Aquilegia vulgaris*): Various colours, plant in spring.
- Cottage Pink (*Dianthus plumarius*): Pink or white fragrant flowers, plant in early spring.

Consider placing shrubs and trees around the edges to create a natural border. For trees, you can opt for native species like Oak (*Quercus*) or Maple (*Acer*), which require minimal maintenance once established. Plant trees in the fall for best results.

Remember to water new plantings regularly in their first year, and then gradually reduce watering as they become established. Also, mulching can help conserve moisture and reduce weed growth.

This plan provides a diverse and colourful garden that will thrive with minimal maintenance once established.

Alpine Rock Garden

Layout:

- Choose a sunny, well-drained area for your rock garden.
- Create raised mounds or terraces using rocks and soil to mimic natural alpine terrain.
- Use rocks of various sizes and shapes for aesthetic appeal.

Plant Selection:

- *Saxifraga* 'Purple Robe' (10cm height, purple flowers) - Plant in early spring.
- *Armeria maritima* 'Alba' (20cm height, white flowers) - Plant in early spring.
- *Achillea millefolium* 'Cerise Queen' (30cm height, pink flowers) - Plant in late spring.
- *Sedum spurium* 'Dragon's Blood' (15cm height, red foliage) - Plant in late spring.
- *Dianthus gratianopolitanus* 'Firewitch' (20cm height, magenta flowers) - Plant in early summer.
- *Aubrieta deltoidea* 'Royal Blue' (10cm height, purple flowers) - Plant in early summer.
- *Thymus serpyllum* 'Elfin' (5cm height, pink flowers) - Plant in early summer.
- *Juniperus communis* 'Gold Cone' (1.5m height, gold foliage) - Plant in early fall.
- *Picea glauca* 'Conica' (1m height, blue-green foliage) - Plant in early fall.
- *Pinus mugo* 'Mops' (1.2m height, dark green needles) - Plant in early fall.

Shrubs/Hedges:

- *Buxus sempervirens* (1m height, green leaves) - Plant in spring or fall.
- *Lavandula angustifolia* 'Munstead' (60cm height, purple flowers) - Plant in spring or fall.

Trees:

- *Acer palmatum* 'Bloodgood' (2.5m height, burgundy leaves) - Plant in fall.
- *Picea pungens* 'Montgomery' (2m height, blue-green foliage) - Plant in fall.

Ground Covers:

- *Campanula carpatica* 'Blue Clips' (15cm height, blue flowers) - Plant in early spring.
- *Arenaria montana* (10cm height, white flowers) - Plant in early spring.
- *Saponaria ocymoides* (15cm height, pink flowers) - Plant in early spring.
- *Phlox subulata* 'Emerald Blue' (10cm height, blue flowers) - Plant in early spring.

Creeping Plants:

- *Achillea tomentosa* (15cm height, yellow flowers) - Plant in early spring.
- *Veronica prostrata* 'Georgia Blue' (10cm height, blue flowers) - Plant in early spring.

Secret garden

Layout Plan:

1. Entrance Arbor: Place an arbor covered with a fragrant climber at the entrance.
2. Pathway: Create winding gravel pathways throughout the garden for a sense of exploration.
3. Focal Tree: Plant a small ornamental tree like the Japanese Maple (*Acer palmatum*) for a pop of color. Plant in early spring.
4. Evergreen Trees: Along the borders, plant Thuja Occidentalis 'Emerald Green' for privacy. Plant in early spring.
5. Shrubs: Mix in some low-maintenance shrubs like Dwarf Korean Lilac (*Syringa meyeri* 'Palibin') for fragrance. Plant in early spring.
6. Perennials: Include easy-to-maintain perennials like Black-Eyed Susan (*Rudbeckia fulgida*). Plant in late spring.
7. Ground Cover: Plant a ground cover like Creeping Jenny (*Lysimachia nummularia*) for a lush carpet. Plant in early spring.
8. Flowering Bushes: Add some color with Butterfly Bush (*Buddleja davidii*) in various shades. Plant in early spring.
9. Hedges: Create low-maintenance hedges using Boxwood (*Buxus sempervirens*). Plant in early spring.
10. Climbers: Train climbing roses to adorn trellises along the walls. Plant in early spring.
11. Ferns: Add texture with shade-tolerant ferns like Ostrich Fern (*Matteuccia struthiopteris*). Plant in early spring.
12. Ornamental Grass: Include a clump of Maiden Grass (*Miscanthus sinensis*) for movement. Plant in early spring.
13. Wildflowers: Scatter wildflower seeds like California Poppies (*Eschscholzia californica*) for a natural look. Plant in late spring.
14. Bulbs: Plant Daffodils (*Narcissus*) and Tulips (*Tulipa*) for spring color. Plant in the fall.
15. Rock Garden: Create a rock garden with low-maintenance succulents like Hens-and-Chicks (*Sempervivum*). Plant in early spring.
16. Patio Area: Designate a cozy patio with potted herbs like Lavender (*Lavandula*) for aroma. Plant in early spring.
17. Bird Feeder: Attract wildlife with a bird feeder and plant bee-friendly flowers like Lavender (*Lavandula*).
18. Water Feature: Install a small pond with water lilies for tranquility.
19. Statuary: Add a subtle garden statue or ornament as a focal point.
20. Seating Area: Place a bench or seating for relaxation.

Pollinator garden

1. Butterfly Bush (*Buddleia davidii*)

- Size: 2-3 meters tall
- Color: Purple or pink
- Plant in early spring.

2. Lavender (*Lavandula angustifolia*)

- Size: 30-60 cm tall
- Color: Purple
- Plant in late spring.

3. Coneflower (*Echinacea purpurea*)

- Size: 60-90 cm tall
- Color: Purple or pink
- Plant in late spring.

4. Black-Eyed Susan (*Rudbeckia hirta*)

- Size: 30-90 cm tall
- Color: Yellow
- Plant in early summer.

5. Catmint (*Nepeta* spp.)

- Size: 30-60 cm tall
- Color: Blue or purple
- Plant in spring.

6. Salvia (*Salvia* spp.)

- Size: Varies by species
- Color: Blue, purple, or red
- Plant in late spring.

7. Russian Sage (*Perovskia atriplicifolia*)

- Size: 1-1.5 meters tall
- Color: Blue
- Plant in early spring.

8. Marigold (*Tagetes* spp.)

- Size: 20-60 cm tall
- Color: Orange or yellow;
-
- Plant in late spring.

9. Bee Balm (*Monarda* spp.)

- Size: 60-90 cm tall
- Color: Red, pink, or purple; Plant in spring.

10. Yarrow (*Achillea millefolium*)

- Size: 30-90 cm tall
- Color: White, yellow, or pink
- Plant in early spring.

11. Milkweed (*Asclepias* spp.)

- Size: Varies by species
- Color: Red, orange, or pink; Plant in early spring.

12. Autumn Joy Sedum (*Sedum spectabile*)

- Size: 30-60 cm tall
- Color: Pink or red; Plant in late spring.

13. Coreopsis (*Coreopsis* spp.)

- Size: 30-60 cm tall
- Color: Yellow or pink; Plant in late spring.

14. Honeysuckle (*Lonicera* spp.)

- Size: Varies by species
- Color: Yellow, orange, or red; Plant in early spring.

15. Wild Bergamot (*Monarda fistulosa*)

- Size: 60-90 cm tall
- Color: Lavender or pink; Plant in spring.

16. Dianthus (*Dianthus* spp.)

- Size: 15-30 cm tall
- Color: Various, including pink and red; Plant in early spring.

17. Verbena (*Verbena* spp.)

- Size: 30-60 cm tall
- Color: Purple or pink; Plant in late spring.

18. Liatris (*Liatris* spp.)

- Size: 60-90 cm tall
- Color: Purple or white; Plant in late spring.

19. Echinops (*Echinops* spp.)

- Size: 60-120 cm tall
- Color: Blue or white; Plant in early spring.

20. Creeping Jenny (*Lysimachia nummularia*)

- Size: Ground cover
- Color: Yellow; Plant in spring.

Bee-friendly Garden

Spring:

1. Lavender (*Lavandula angustifolia*)
 - Size: 0.6 x 0.6 meters
 - Color: Purple
 - Plant in early spring.
2. Crocus (*Crocus spp.*)
 - Size: 0.1 x 0.1 meters
 - Color: Various; Plant in late winter for early spring blooms.
3. Wild Lilac (*Ceanothus spp.*)
 - Size: 1.5 x 1.5 meters
 - Color: Blue or purple; Plant in early spring.
4. Dandelion (*Taraxacum officinale*)
 - Size: Varies (wild)
 - Color: Yellow; Naturally present in spring.

Summer:

5. Bee Balm (*Monarda spp.*)
 - Size: 0.9 x 0.9 meters
 - Color: Red, pink, or purple; Plant in early summer.
6. Sunflower (*Helianthus annuus*)
 - Size: 1.5 x 1.5 meters
 - Color: Yellow or red; Plant in late spring for summer blooms.
7. Echinacea (*Echinacea purpurea*)
 - Size: 0.6 x 0.6 meters
 - Color: Purple or white; Plant in early summer.
8. Catmint (*Nepeta spp.*)
 - Size: 0.6 x 0.6 meters
 - Color: Purple or blue; Plant in late spring.

Late Summer:

9. Russian Sage (*Perovskia atriplicifolia*)
 - Size: 1.2 x 1.2 meters
 - Color: Blue or purple; Plant in late spring or early summer.
10. Coreopsis (*Coreopsis spp.*)
 - Size: 0.6 x 0.6 meters
 - Color: Yellow or red
 - Plant in late spring.

11. Borage (*Borago officinalis*)

- Size: 0.6 x 0.6 meters
- Color: Blue; Plant in late spring.

Fall:

12. Aster (*Aster* spp.)

- Size: 0.6 x 0.6 meters
- Color: Various; Plant in late summer for fall blooms.

13. Goldenrod (*Solidago* spp.)

- Size: 0.9 x 0.9 meters
- Color: Yellow; Plant in late summer.

14. Sedum (*Sedum* spp.)

- Size: 0.3 x 0.3 meters
- Color: Pink or white; Plant in late summer.

Year-round:

15. Rosemary (*Rosmarinus officinalis*)

- Size: 0.9 x 0.9 meters
- Color: Blue; Plant in spring for year-round fragrance.

16. Thyme (*Thymus* spp.)

- Size: 0.3 x 0.3 meters
- Color: Purple or white; Plant in spring for year-round ground cover.

17. Heather (*Calluna vulgaris*)

- Size: 0.3 x 0.3 meters
- Color: Pink or purple; Plant in spring for year-round color.

18. Lemon Balm (*Melissa officinalis*)

- Size: 0.6 x 0.6 meters
- Color: White; Plant in spring for year-round use.

19. Creeping Jenny (*Lysimachia nummularia*)

- Size: 0.1 x 0.1 meters
- Color: Yellow; Plant in spring for year-round ground cover.

20. Marjoram (*Origanum majorana*)

- Size: 0.3 x 0.3 meters
- Color: Pink or white; Plant in spring for year-round culinary use.

Winter garden

1. Japanese Maple (*Acer palmatum*)
 - Size: 2-3 meters tall
 - Color: Red or Green (varieties available)
 - Plant in late fall or early spring.
2. Boxwood (*Buxus sempervirens*)
 - Size: 1-1.5 meters tall
 - Color: Green
 - Plant in spring or fall.
3. Winter Jasmine (*Jasminum nudiflorum*)
 - Size: 1.5 meters tall
 - Color: Yellow
 - Plant in early spring or late fall.
4. Dwarf Alberta Spruce (*Picea glauca* 'Conica')
 - Size: 1-2 meters tall
 - Color: Green
 - Plant in spring or fall.
5. Hellebore (*Helleborus* spp.)
 - Size: 30-60 cm tall
 - Color: Various (white, pink, purple)
 - Plant in late winter or early spring.
6. Winterberry (*Ilex verticillata*)
 - Size: 1-3 meters tall
 - Color: Red berries; Plant in fall for winter interest.
7. Yew (*Taxus baccata*)
 - Size: 2-4 meters tall
 - Color: Green; Plant in early spring or fall.
8. Witch Hazel (*Hamamelis* spp.)
 - Size: 2-4 meters tall
 - Color: Yellow or red; Plant in late winter or early spring.
9. Pieris (*Pieris japonica*)
 - Size: 1-3 meters tall
 - Color: White or pink
 - Plant in early spring or fall.
10. Heather (*Calluna vulgaris*)
 - Size: 30-60 cm tall
 - Color: Various (pink, purple, white)

- Plant in late summer or early fall.
11. Pine (*Pinus* spp.)
 - Size: Varies by species
 - Color: Green
 - Plant in early spring or fall.
 12. Snowdrop (*Galanthus nivalis*)
 - Size: 10-20 cm tall
 - Color: White
 - Plant in late summer to early autumn.
 13. Bergenia (*Bergenia cordifolia*)
 - Size: 30-60 cm tall
 - Color: Pink or purple
 - Plant in spring or fall.
 14. Cotoneaster (*Cotoneaster* spp.)
 - Size: 1-2 meters tall
 - Color: Red berries; Plant in early spring or fall.
 15. Wintercreeper (*Euonymus fortunei*)
 - Size: 1-2 meters tall
 - Color: Green; Plant in spring or fall.
 16. Viburnum (*Viburnum* spp.)
 - Size: Varies by species
 - Color: White or pink; Plant in spring or fall.
 17. Juniper (*Juniperus* spp.)
 - Size: Varies by species
 - Color: Green; Plant in spring or fall.
 18. Camellia (*Camellia japonica*)
 - Size: 1-5 meters tall
 - Color: Various (pink, red, white); Plant in early spring or fall.
 19. Lenten Rose (*Helleborus orientalis*)
 - Size: 30-60 cm tall
 - Color: Various (purple, pink, white); Plant in late winter or early spring.
 20. Mahonia (*Mahonia* spp.)
 - Size: 1-3 meters tall
 - Color: Yellow
 - Plant in late winter or early spring.

Vineyard garden

Here's a 100-square-meter layout and a list of 20 plant suggestions, along with their sizes, colors, and planting times:

Layout:

1. Vineyard Rows (60 sq. meters): Plant grapevines in rows, leaving about 1.5 meters between each row.
2. Flowering Border (20 sq. meters): Surround the vineyard with flowering plants to attract pollinators.
3. Shaded Seating Area (20 sq. meters): Plant trees for shade and add some seating.

Plant Suggestions:

Vineyard Rows:

1. Grapevines (*Vitis vinifera*)
 - Size: Start with 1-year-old vines.
 - Color: Green leaves; grapes change color as they ripen.
 - Plant in early spring or late fall.
2. Lavender (*Lavandula*)
 - Size: 30-60 cm tall.
 - Color: Purple flowers.
 - Plant in spring or fall for best results.
3. Rosemary (*Rosmarinus officinalis*)
 - Size: 60-90 cm tall.
 - Color: Blue flowers.
 - Plant in spring or fall.
4. Thyme (*Thymus vulgaris*)
 - Size: 15-30 cm tall.
 - Color: Purple flowers.
 - Plant in spring or fall.

Flowering Border:

5. Butterfly Bush (*Buddleia davidii*)
 - Size: 1.5-3 meters tall.
 - Color: Various, attracts butterflies.
 - Plant in spring.
6. Coneflowers (*Echinacea*)
 - Size: 60-120 cm tall.
 - Color: Various, often purple or pink.
 - Plant in spring.
7. Bee Balm (*Monarda*)

- Size: 60-90 cm tall.
- Color: Red, pink, or purple flowers.
- Plant in spring.

8. Black-Eyed Susan (*Rudbeckia*)

- Size: 30-90 cm tall.
- Color: Yellow flowers.
- Plant in spring.

Shaded Seating Area:

9. Maple Tree (*Acer* spp.)

- Size: Plant a young sapling.
- Color: Green leaves, fall colors vary.
- Plant in early spring or late fall.

10. Japanese Cherry Tree (*Prunus serrulata*)

- Size: Plant a young sapling.
- Color: Pink or white blossoms in spring.
- Plant in early spring.

11. Ferns (various species)

- Size: Varies by species.
- Color: Green foliage.
- Plant in spring or fall.

12. Hostas (*Hosta* spp.)

- Size: Varies by species.
- Color: Green leaves, some with variegation.
- Plant in spring or fall.

Fruit Garden

- Location: Select a sunny spot with well-draining soil. Ensure its easily accessible for maintenance.
- Layout: Consider the following layout options:
- Rows: Plant fruit trees or bushes in rows with adequate spacing between them.
- Espalier: Train fruit trees against a wall or trellis to save space.
- Mixed Beds: Create mixed beds with a variety of fruit plants, herbs, and companion plants.
- Spacing: Research the spacing requirements for each fruit variety and arrange them accordingly to prevent overcrowding.
- Paths: Include paths between the rows or beds for easy access and maintenance. These paths can be gravel, mulch, or steppingstones.
- Watering: Plan for irrigation, such as drip systems or soaker hoses, to ensure even watering.

1. Apple Trees (*Malus domestica*)

- Number: 2
- Size: Semi-dwarf varieties (2-3 meters tall)
- Color: Green leaves, white-pink blossoms
- Planting: Early spring

2. Pear Trees (*Pyrus communis*)

- Number: 2
- Size: Semi-dwarf varieties (2-3 meters tall)
- Color: Green leaves, white blossoms
- Planting: Early spring

3. Blueberry Bushes (*Vaccinium* spp.)

- Number: 4
- Size: Compact (1-1.5 meters tall)
- Color: Green leaves, white-pink blossoms, and blueberries
- Planting: Early spring or fall

4. Raspberry Bushes (*Rubus idaeus*)

- Number: 6
- Size: Upright varieties (1.5-2 meters tall)
- Color: Green leaves, red berries
- Planting: Early spring or fall

5. Strawberry Ground Cover (*Fragaria x ananassa*)

- Number: 20
- Size: Low-growing
- Color: Green leaves, white blossoms, red strawberries
- Planting: Early spring

6. Blackberry Bushes (*Rubus fruticosus*)

- Number: 4

- Size: Upright varieties (1.5-2 meters tall)
 - Color: Green leaves, blackberries
 - Planting: Early spring or fall
7. Cherry Trees (*Prunus avium*)
- Number: 2
 - Size: Semi-dwarf varieties (2-3 meters tall)
 - Color: Green leaves, white blossoms
 - Planting: Early spring
8. Currant Bushes (*Ribes* spp.)
- Number: 4
 - Size: Compact (1-1.5 meters tall)
 - Color: Green leaves, red or black currants
 - Planting: Early spring
9. Gooseberry Bushes (*Ribes uva-crispa*)
- Number: 4
 - Size: Compact (1-1.5 meters tall)
 - Color: Green leaves, green or red gooseberries
 - Planting: Early spring
10. Peach Trees (*Prunus persica*)
- Number: 2
 - Size: Dwarf varieties (1.5-2 meters tall)
 - Color: Green leaves, pink blossoms
 - Planting: Early spring
11. Plum Trees (*Prunus domestica*)
- Number: 2
 - Size: Semi-dwarf varieties (2-3 meters tall)
 - Color: Green leaves, white blossoms
 - Planting: Early spring
12. Lavender (*Lavandula* spp.)
- Number: 5
 - Size: Compact (0.5-1 meter tall)
 - Color: Purple flowers
 - Planting: Early spring
13. Rosemary (*Rosmarinus officinalis*)
- Number: 3
 - Size: Compact (0.5-1 meter tall)
 - Color: Blue flowers
 - Planting: Early spring
14. Thyme (*Thymus vulgaris*)

- Number: 5
 - Size: Low-growing
 - Color: Pink to purple flowers
 - Planting: Early spring
15. Mint (*Mentha* spp.)
- Number: 3
 - Size: Low-growing
 - Color: White to purple flowers
 - Planting: Early spring
16. Fennel (*Foeniculum vulgare*)
- Number: 3
 - Size: Medium (1-1.5 meters tall)
 - Color: Yellow flowers
 - Planting: Early spring
17. Sage (*Salvia officinalis*)
- Number: 3
 - Size: Compact (0.5-1 meter tall)
 - Color: Purple flowers
 - Planting: Early spring
18. Chives (*Allium schoenoprasum*)
- Number: 10
 - Size: Low-growing
 - Color: Purple flowers
 - Planting: Early spring
19. Oregano (*Origanum vulgare*)
- Number: 5
 - Size: Low-growing
 - Color: Pink to purple flowers
 - Planting: Early spring
20. Companion Flowers (Marigolds, Nasturtiums)
- Number: As needed for color and pest control
 - Size: Varies
 - Color: Assorted (marigolds are typically orange or yellow, nasturtiums are various colors)
 - Planting: Early spring

Tuscan garden

1. Olive Trees (*Olea europaea*)

- Size: 3-4 meters tall
- Color: Silvery-green leaves
- Plant in early spring.

2. Lavender (*Lavandula* spp.)

- Size: 60-90 cm tall
- Color: Purple or blue flowers
- Plant in late spring.

3. Rosemary (*Rosmarinus officinalis*)

- Size: 60-90 cm tall
- Color: Blue flowers
- Plant in early spring.

4. Cypress Trees (*Cupressus sempervirens*)

- Size: 5-10 meters tall
- Color: Evergreen with dark green foliage
- Plant in early spring.

5. Italian Cypress (*Cupressus sempervirens* 'Stricta')

- Size: 12-15 meters tall
- Color: Upright, dark green foliage
- Plant in early spring.

6. Russian Sage (*Perovskia atriplicifolia*)

- Size: 90-120 cm tall
- Color: Silver-gray foliage with purple flowers
- Plant in late spring.

7. Tuscan Sun Sunflower (*Helianthus annuus* 'Tuscan Sun')

- Size: 60-90 cm tall
- Color: Bright yellow flowers
- Plant in late spring.

8. Italian Cypress (*Cupressus sempervirens* 'Totem Pole')

- Size: 4-6 meters tall
- Color: Slim, columnar shape with dark green foliage
- Plant in early spring.

9. Mediterranean Fan Palm (*Chamaerops humilis*)

- Size: 2-3 meters tall
- Color: Silvery-green fan-shaped leaves
- Plant in early spring.

10. Mexican Feather Grass (*Nassella tenuissima*)

- Size: 45-60 cm tall
- Color: Feathery, green foliage
- Plant in late spring.

11. Agapanthus (*Agapanthus africanus*)

- Size: 30-60 cm tall
- Color: Blue or white flowers; Plant in early spring.

12. Germander (*Teucrium chamaedrys*)

- Size: 30-45 cm tall
- Color: Small pink or purple flowers; Plant in early spring.

13. Grapevines (*Vitis vinifera*)

- Size: Varies based on trellis support
- Color: Green leaves, grapes when in season; Plant in early spring.

14. Mexican Orange Blossom (*Choisya ternata*)

- Size: 1-2 meters tall
- Color: Fragrant white flowers; Plant in early spring.

15. Thyme (*Thymus* spp.)

- Size: 10-30 cm tall
- Color: Green leaves, some varieties have pink flowers; Plant in early spring.

16. Italian Stone Pine (*Pinus pinea*)

- Size: 8-12 meters tall
- Color: Umbrella-shaped tree with green foliage; Plant in early spring.

17. Creeping Juniper (*Juniperus horizontalis*)

- Size: 30-60 cm tall
- Color: Green foliage with a silver tint; Plant in early spring.

18. Santolina (*Santolina chamaecyparissus*)

- Size: 30-60 cm tall
- Color: Silvery-gray leaves
- Plant in early spring.

19. Euphorbia (*Euphorbia characias*)

- Size: 60-90 cm tall
- Color: Blue-green foliage with chartreuse flowers
- Plant in early spring.

20. Red Hot Poker (*Kniphofia uvaria*)

- Size: 60-90 cm tall
- Color: Red, orange, or yellow flowers
- Plant in late spring.

Damp garden

Layout Plan:

- Wetland Area (40 sq. m): Create a central wetland area with water-loving plants, a small pond, and rocks for added interest.
- Perimeter (60 sq. m): Surround the wetland area with moisture-tolerant trees, shrubs, and ground covers.

Plant Suggestions:

Wetland Area (40 sq. m):

- Cattails (*Typha* spp.): Plant tall cattails (1.5-3 m) with brown flower spikes near the water's edge in late spring.
- Water Iris (*Iris pseudacorus*): Add yellow flag iris (60-120 cm) for a splash of color in early spring.
- Pickerelweed (*Pontederia cordata*): Plant pickerelweed (60-90 cm) with violet-blue spikes in late spring.
- Bog Bean (*Menyanthes trifoliata*): Introduce bog bean (20-30 cm) with white or pink flowers in early spring.
- Marsh Marigold (*Caltha palustris*): Plant marsh marigold (30-60 cm) with bright yellow flowers in early spring.

Perimeter (60 sq. m):

- Alder Trees (*Alnus* spp.): Plant alder trees (3-6 m) around the perimeter to provide shade and habitat in late autumn or early spring.
- Dogwood (*Cornus* spp.): Choose native dogwood shrubs (1-3 m) with white or pink flowers in early spring.
- Willow Trees (*Salix* spp.): Plant willow trees (4-7 m) for their graceful branches near water sources in late autumn or early spring.
- Buttonbush (*Cephalanthus occidentalis*): Add buttonbush (1-3 m) with white spherical flowers in late spring.
- Swamp Rose (*Rosa palustris*): Introduce swamp rose shrubs (1-2 m) with pink or red flowers in early spring.
- Blue Flag Iris (*Iris versicolor*): Plant blue flag iris (60-120 cm) with blue-purple flowers in late spring.
- Turtlehead (*Chelone* spp.): Choose turtlehead (60-90 cm) for its pink or white blooms in late summer.
- Sweet Flag (*Acorus* spp.): Plant sweet flag (30-60 cm) with fragrant leaves in early spring.
- Creeping Jenny (*Lysimachia nummularia*): Ground-covering plants (10-20 cm) with bright green leaves, best in early spring.
- Lobelia (*Lobelia cardinalis*): Add cardinal flower (60-90 cm) with vibrant red flowers in late summer.
- Fringed Sedge (*Carex crinita*): Introduce fringed sedge (30-60 cm) for its ornamental grass-like appearance in early spring.
- Swamp Milkweed (*Asclepias incarnata*): Plant swamp milkweed (90-150 cm) with pink or white flowers in late spring.
- Bluejoint Grass (*Calamagrostis canadensis*): Include bluejoint grass (1-2 m) for its ornamental, feathery seed heads in early spring.

- Highbush Cranberry (*Viburnum opulus*): Choose highbush cranberry shrubs (2-4 m) with white flowers in late spring.
- Wild Ginger (*Asarum canadense*): Add wild ginger (10-20 cm) with unique heart-shaped leaves in early spring.

Coppice garden

Layout Plan:

1. Coppice Area (70 sq. meters): This is the main coppice area where you'll plant trees that can be harvested.
2. Hedge Area (15 sq. meters): Surrounding the coppice area with a low-maintenance hedge for privacy and aesthetics.
3. Pathways (10 sq. meters): Create pathways using gravel or stepping stones to access different parts of the garden.
4. Flower Beds (5 sq. meters): Include a few small flower beds for added color and pollinator-friendly plants.

Plant Suggestions:

Coppice Area:

- Chestnut (*Castanea sativa*): Plant 5 chestnut trees, spaced about 4 meters apart. They produce edible nuts and beautiful autumn foliage.
- Willow (*Salix* spp.): Plant 5 willow trees, spaced similarly. Willow can be harvested for basketry or biofuel.
- Coppiced Hazel (*Corylus avellana*): Plant 5 hazel shrubs, spaced about 2 meters apart. They produce tasty nuts.
- Bamboo (*Phyllostachys* spp.): Plant 5 bamboo clumps in a corner for quick growth and privacy.

Hedge Area: 5. Boxwood (*Buxus sempervirens*): Use boxwood for a low-maintenance hedge. Plant along the perimeter.

- Privet (*Ligustrum* spp.): Another option for a dense, evergreen hedge.
- Flower Beds: Lavender (*Lavandula angustifolia*): Plant lavender for its fragrant purple blooms.
- Coneflowers (*Echinacea* spp.): Add coneflowers for their colorful petals.

Plant Sizes and Colors:

- Chestnut and willow trees can grow up to 10-15 meters in height with green foliage.
- Hazel shrubs reach 2-3 meters in height with green leaves.
- Bamboo can grow 3-5 meters tall and comes in various shades of green.
- Boxwood and privet hedge plants are usually kept around 1-2 meters in height and have dark green leaves.
- Lavender features silvery-green foliage with purple flowers.
- Coneflowers have daisy-like petals in shades of pink, purple, or white.

Planting Times:

- Trees: Plant chestnut, willow, and hazel trees in late winter or early spring.
- Bamboo: Spring is ideal for bamboo planting.
- Boxwood and privet: These can be planted in spring or early autumn.
- Lavender and coneflowers: Plant them in early spring after the last frost.

Rose garden

1. Rose Varieties:

- Rose 'Knock Out' (Red) - Plant in early spring.
- Rose 'Sunny Knock Out' (Yellow) - Plant in early spring.
- Rose 'Easy Elegance' (Pink) - Plant in early spring.
- Rose 'White Out' (White) - Plant in early spring.

2. Companion Plants:

- Lavender (*Lavandula angustifolia*) - Plant around the roses for fragrance and color (purple) in spring.
- Catmint (*Nepeta*) - Plant as edging, blooms in late spring (blue/purple).
- Daylilies (*Hemerocallis*) - Plant along pathways, blooms in summer (various colors).
- Salvia 'May Night' (*Salvia nemorosa*) - Plant near roses, blooms in early summer (violet-blue).

3. Small Trees:

- Japanese Maple (*Acer palmatum*) - Plant in a corner for a focal point (various leaf colors).
- Crepe Myrtle (*Lagerstroemia indica*) - Plant in late spring (various colors).

4. Hedges:

- Boxwood (*Buxus sempervirens*) - Plant as low border hedges (green).

5. Ground Covers:

- Creeping Jenny (*Lysimachia nummularia*) - Plant around the base of roses (yellow-green).

6. Pathway:

- Use gravel or stepping stones for a path.

7. Maintenance:

- Water roses deeply once a week.
- Prune roses in early spring and deadhead spent blooms regularly.
- Trim hedges in late winter or early spring.
- Mulch around plants to retain moisture and deter weeds.
- Fertilize roses in spring and early summer with rose-specific fertilizer.

8. Layout:

- Place roses in the centre, with taller varieties towards the back.
- Edge the garden with low boxwood hedges. Plant lavender and catmint around the roses. Scatter daylilies for colour along the pathways.
- Position the small trees in opposite corners. Crepe myrtle can be planted in a central location or near the trees.
- Fill in spaces with ground covers like Creeping Jenny.
- Create a meandering pathway through the garden.

Bluebell wood

Layout:

- Start by clearing the area of any existing vegetation and debris.
- Divide the 100 square meters into a mix of open spaces, pathways, and planted areas to create a natural woodland feel.

Trees:

- Silver Birch (*Betula pendula*) - Plant in early spring, white bark, grows up to 20m.
- Rowan (*Sorbus aucuparia*) - Spring planting, small red berries, up to 15m.

Hedges:

- Hawthorn (*Crataegus monogyna*) - Early spring, white flowers, dense hedge.
- Blackthorn (*Prunus spinosa*) - Winter planting, white flowers, provides sloes.

Bluebells:

- English Bluebell (*Hyacinthoides non-scripta*) - Plant in late summer for spring bloom, blue.

Ground Cover:

- Wild Garlic (*Allium ursinum*) - Autumn planting, white flowers, spreads rapidly.
- Wood Anemone (*Anemone nemorosa*) - Plant in early autumn, white or pink.

Shrubs:

- Spindle (*Euonymus europaeus*) - Spring planting, red berries in autumn.
- Guelder Rose (*Viburnum opulus*) - Spring planting, white flowers, red berries.
- Dogwood (*Cornus sanguinea*) - Spring planting, red stems in winter.

Ferns:

- Lady Fern (*Athyrium filix-femina*) - Spring or autumn planting, feathery fronds.
- Royal Fern (*Osmunda regalis*) - Plant in spring, large green fronds.

Perennials:

- Foxglove (*Digitalis purpurea*) - Spring planting, tall spikes, purple or white.
- Primrose (*Primula vulgaris*) - Autumn or spring planting, various colors.
- Wood Sorrel (*Oxalis acetosella*) - Spring planting, clover-like leaves, white or pink flowers.
- Wild Geranium (*Geranium sylvaticum*) - Spring planting, purple-blue flowers.

Bulbs:

- Snowdrops (*Galanthus nivalis*) - Plant in late summer, white.
- Crocus (*Crocus vernus*) - Autumn planting, various colors.

Maintenance:

- Mulch the planted areas to retain moisture and suppress weeds.
- Regularly remove invasive or non-native plants.
- Prune trees and shrubs as needed to maintain shape.

Spring garden

Layout Plan:

- Front: Dwarf Lilac (*Syringa meyeri*) - Compact, 1m tall, purple flowers. Plant in early spring.
- Front: Dwarf Spirea (*Spiraea japonica*) - Low shrub, 60cm tall, pink flowers. Plant in early spring.
- Front: Carpet Roses (*Rosa 'The Fairy'*) - Ground cover, pink blooms. Plant in early spring.
- Path Edges: Lavender (*Lavandula angustifolia*) - Low, 30-60cm tall, purple. Plant in early spring.
- Path Edges: Blue Fescue Grass (*Festuca glauca*) - 20-30cm tall, blue-gray. Plant in early spring.
- Hedges: Boxwood (*Buxus sempervirens*) - 1-2m tall, evergreen. Plant in early spring.
- Hedges: Privet (*Ligustrum vulgare*) - 1-2m tall, fast-growing, green leaves. Plant in early spring.
- Focal Point: Japanese Maple (*Acer palmatum*) - Small tree, 2-3m tall, red foliage. Plant in early spring.
- Back: Magnolia Stellata (*Magnolia stellata*) - Compact tree, 3m tall, white flowers. Plant in early spring.
- Back: Cherry Blossom (*Prunus serrulata*) - Ornamental tree, 3-4m tall, pink blooms. Plant in early spring.

Understory Plants:

- Under Trees: Hostas (*Hosta* spp.) - Medium size, various leaf colours. Plant in early spring.
- Shade Perennials: Bleeding Heart (*Dicentra spectabilis*) - 60-90cm tall, pink or white. Plant in early spring.
- Ground Cover: Creeping Jenny (*Lysimachia nummularia*) - Low, yellow-green leaves. Plant in early spring.
- Borders: Tulips (*Tulipa* spp.) - Various colours, plant in late autumn for spring blooms.
- Borders: Daffodils (*Narcissus* spp.) - Yellow, plant in late autumn for spring flowers.

Bulb Suggestions:

- Bulbs: Crocus (*Crocus* spp.) - Purple, white, or yellow. Plant in late autumn for early spring colour.
- Bulbs: Snowdrops (*Galanthus nivalis*) - White, plant in late autumn for late winter/early spring blooms.

Pots/Containers:

- Containers: Pansies (*Viola tricolor*) - Various colours, plant in early spring.
- Containers: Geraniums (*Pelargonium* spp.) - Various colours, plant in early spring.
- Hanging Baskets: Petunias (*Petunia* spp.) - Various colours, plant in early spring.

Bulb garden

1. Tulips (*Tulipa* spp.)
 - Size: Various heights, 10-60 cm
 - Colors: Mix of red, yellow, and purple
 - Plant in early autumn (September-October).
2. Daffodils (*Narcissus* spp.)
 - Size: 20-40 cm
 - Colors: Yellow and white
 - Plant in late summer to early autumn (August-October).
3. Crocuses (*Crocus* spp.)
 - Size: 5-15 cm
 - Colors: Purple and white
 - Plant in late summer to early autumn (August-September).
4. Alliums (*Allium* spp.)
 - Size: 30-90 cm
 - Colors: Purple and white
 - Plant in late autumn (November).
5. Snowdrops (*Galanthus* spp.)
 - Size: 10-15 cm
 - Colors: White
 - Plant in late summer to early autumn (September-October).
6. Grape Hyacinths (*Muscari* spp.)
 - Size: 10-20 cm
 - Colors: Blue and purple
 - Plant in early autumn (September).
7. Hyacinths (*Hyacinthus* spp.)
 - Size: 20-30 cm
 - Colors: Various, including pink, blue, and white
 - Plant in early autumn (September).
8. Crown Imperial (*Fritillaria imperialis*)
 - Size: 60-90 cm
 - Colors: Orange or yellow
 - Plant in late autumn (November).
9. Lily of the Valley (*Convallaria majalis*)
 - Size: 15-25 cm
 - Colors: White
 - Plant in early autumn (September-October).
10. Bluebells (*Hyacinthoides non-scripta*)

- Size: 20-50 cm
 - Colors: Blue; Plant in early autumn (September).
11. Siberian Squill (*Scilla siberica*)
- Size: 10-15 cm
 - Colors: Blue
 - Plant in early autumn (September).
12. Dutch Iris (*Iris × hollandica*)
- Size: 30-60 cm
 - Colors: Various, including purple, yellow, and white
 - Plant in early autumn (September).
13. Fritillary (*Fritillaria meleagris*)
- Size: 15-30 cm
 - Colors: Checkered pattern in purple and white
 - Plant in late autumn (November).
14. Anemones (*Anemone blanda*)
- Size: 10-15 cm
 - Colors: Pink, blue, or white; Plant in early autumn (September).
15. Crownvetch (*Securigera varia*)
- Size: Low ground cover
 - Colors: Pink and purple; Plant in early spring (March).
16. Lavender (*Lavandula* spp.)
- Size: 30-60 cm
 - Colors: Purple; Plant in early spring (March).
17. Rosemary (*Rosmarinus officinalis*)
- Size: 60-90 cm
 - Colors: Blue flowers; Plant in early spring (March).
18. Boxwood (*Buxus* spp.)
- Size: Various, can be trimmed to desired shape
 - Colors: Green; Plant as hedges in early spring (March).
19. Forsythia (*Forsythia* spp.)
- Size: 150-300 cm
 - Colors: Yellow; Plant as a small tree or shrub in early spring (March).
20. Japanese Maple (*Acer palmatum*)
- Size: 150-300 cm
 - Colors: Red or green leaves; Plant as a focal point tree in early spring (March).

Summer garden

1. Lavender (*Lavandula angustifolia*)
 - Size: 0.6m x 0.6m
 - Color: Purple
 - Plant in late spring.
2. Rosemary (*Rosmarinus officinalis*)
 - Size: 1m x 1m
 - Color: Blue
 - Plant in early spring.
3. Russian Sage (*Perovskia atriplicifolia*)
 - Size: 1.2m x 1.2m
 - Color: Blue
 - Plant in late spring.
4. Sedum 'Autumn Joy' (*Sedum spectabile*)
 - Size: 0.6m x 0.6m
 - Color: Pink
 - Plant in early summer.
5. Daylilies (*Hemerocallis* spp.)
 - Size: 0.7m x 0.7m
 - Color: Various
 - Plant in early spring.
6. Black-Eyed Susans (*Rudbeckia hirta*)
 - Size: 0.6m x 0.6m
 - Color: Yellow
 - Plant in late spring.
7. Hostas (*Hosta* spp.)
 - Size: 0.5m x 0.5m
 - Color: Varied foliage
 - Plant in early spring.
8. Japanese Maple (*Acer palmatum*)
 - Size: 2m x 2m
 - Color: Red foliage
 - Plant in early spring or fall.
9. Boxwood (*Buxus sempervirens*)
 - Size: 1m x 1m
 - Color: Green; Plant in early spring or fall.
10. Coneflowers (*Echinacea purpurea*)

- Size: 0.8m x 0.8m
 - Color: Pink or purple
 - Plant in late spring.
11. Hydrangeas (*Hydrangea macrophylla*)
- Size: 1.5m x 1.5m
 - Color: Blue, pink, or white
 - Plant in spring.
12. Bergenia (*Bergenia cordifolia*)
- Size: 0.5m x 0.5m
 - Color: Pink or red
 - Plant in early spring.
13. Yarrow (*Achillea millefolium*)
- Size: 0.6m x 0.6m
 - Color: Yellow, pink, or red
 - Plant in late spring.
14. Salvia 'May Night' (*Salvia nemorosa*)
- Size: 0.7m x 0.7m
 - Color: Purple; Plant in early summer.
15. Coral Bells (*Heuchera* spp.)
- Size: 0.3m x 0.3m
 - Color: Varied foliage; Plant in early spring.
16. Russian Olive Tree (*Elaeagnus angustifolia*)
- Size: 4m x 4m
 - Color: Silver-green leaves; Plant in early spring or fall.
17. Smokebush (*Cotinus coggygria*)
- Size: 2m x 2m
 - Color: Purple foliage; Plant in early spring.
18. Butterfly Bush (*Buddleja davidii*)
- Size: 2m x 2m
 - Color: Various; Plant in early spring.
19. Creeping Jenny (*Lysimachia nummularia*)
- Size: Ground cover
 - Color: Yellow-green foliage; Plant in spring.
20. Japanese Forest Grass (*Hakonechloa macra*)
- Size: 0.5m x 0.5m
 - Color: Golden-green; Plant in early spring.

Sunflower garden

1. Sunflowers (*Helianthus annuus*): Plant in the center for a focal point. Choose varieties like 'Autumn Beauty' (various colors) and 'Moulin Rouge' (deep red). Sow seeds in late spring or early summer.
2. Lavender (*Lavandula angustifolia*): Plant along the border for fragrance and to attract pollinators. They have purple flowers and should be planted in early spring.
3. Russian Sage (*Perovskia atriplicifolia*): Plant in clusters for silvery foliage and blue flowers. These should be planted in early spring.
4. Yarrow (*Achillea millefolium*): Plant around the sunflowers for white or yellow blooms. Plant in early spring.
5. Coneflowers (*Echinacea purpurea*): Add a burst of color with purple, pink, or white coneflowers. Plant in early spring.
6. Black-Eyed Susans (*Rudbeckia hirta*): These bright yellow flowers are low maintenance. Plant in early spring.
7. Sedum (*Sedum* spp.): Succulent-like plants with various colors, such as green, red, and pink. Plant in early spring.
8. Zinnias (*Zinnia elegans*): Plant in summer for vibrant colors like red, orange, and pink.
9. Daylilies (*Hemerocallis* spp.): Plant along walkways for colorful, trumpet-shaped flowers. Plant in early spring.
10. Coreopsis (*Coreopsis* spp.): These yellow or orange flowers bloom throughout summer. Plant in early spring.
11. Butterfly Bush (*Buddleia davidii*): Attract butterflies with purple, white, or pink blooms. Plant in early spring.
12. Catmint (*Nepeta* spp.): Blue or purple flowers attract bees. Plant in early spring.
13. Hostas (*Hosta* spp.): Variegated foliage in shades of green and white. Plant in early spring.
14. Fountain Grass (*Pennisetum alopecuroides*): Plant for ornamental grass texture. Early spring is ideal.
15. Japanese Maple (*Acer palmatum*): A small tree with red or green leaves, adding height and color. Plant in early spring or early fall.
16. Crepe Myrtle (*Lagerstroemia indica*): A low-maintenance tree with pink, white, or purple flowers. Plant in early spring.
17. Boxwood (*Buxus sempervirens*): Plant as hedges for green, dense foliage. Early spring or early fall is suitable.
18. Lilac (*Syringa* spp.): A fragrant shrub with purple, white, or pink blooms. Plant in early spring.
19. Spirea (*Spiraea* spp.): Compact shrubs with white or pink flowers. Plant in early spring.
20. Dwarf Alberta Spruce (*Picea glauca* 'Conica'): Add evergreen structure. Plant in early spring.

Desert Garden

1. Agave Americana (Century Plant)
 - Size: Large rosette, up to 2 meters wide.
 - Color: Gray-green.
 - Plant in late spring.
2. Yucca Filamentosa (Adam's Needle)
 - Size: 0.9-1.5 meters tall.
 - Color: Green with white threads.
 - Plant in early spring.
3. Opuntia Prickly Pear (Cactus)
 - Size: Various sizes.
 - Color: Green with paddle-shaped pads.
 - Plant in late spring.
4. Echinocactus Grusonii (Golden Barrel Cactus)
 - Size: Globular, up to 1 meter in diameter.
 - Color: Golden-yellow.
 - Plant in late spring.
5. Aloe Vera
 - Size: 0.3-0.6 meters tall.
 - Color: Green with serrated edges.
 - Plant in early spring.
6. Dasylirion Wheeleri (Desert Spoon)
 - Size: Rosettes up to 1.5 meters wide.
 - Color: Gray-green.
 - Plant in early spring.
7. Desert Marigold (Baileya Multiradiata)
 - Size: 0.3-0.6 meters tall.
 - Color: Bright yellow.
 - Plant in late spring.
8. Ocotillo (Fouquieria splendens)
 - Size: Up to 5 meters tall.
 - Color: Green with vibrant red blooms.
 - Plant in late spring.
9. Texas Sage (Leucophyllum frutescens)
 - Size: 1-2 meters tall.
 - Color: Silver-gray foliage with purple blooms.
 - Plant in late spring.
10. Red Yucca (Hesperaloe parviflora)
 - Size: 0.6-1 meter tall.
 - Color: Green with tall spikes of red tubular flowers.
 - Plant in early spring.
11. Desert Willow (Chilopsis linearis)
 - Size: 3-6 meters tall.
 - Color: Green with pink to purple trumpet-shaped flowers.
 - Plant in early spring.
12. Mexican Feather Grass (Nassella tenuissima)

- Size: 0.6-1 meter tall.
 - Color: Green with feathery, golden seed heads.
 - Plant in early spring.
13. Blue Palo Verde (*Parkinsonia florida*)
- Size: Small tree, up to 6 meters tall.
 - Color: Blue-green foliage with yellow blooms.
 - Plant in late spring.
14. Desert Mariposa Lily (*Calochortus kennedyi*)
- Size: 0.3-0.6 meters tall.
 - Color: White to pink with purple markings.
 - Plant in late spring.
15. Desert Four O'Clock (*Mirabilis multiflora*)
- Size: 0.3-0.6 meters tall.
 - Color: Magenta flowers.
 - Plant in late spring.
16. Creosote Bush (*Larrea tridentata*)
- Size: Shrub, 1-2 meters tall.
 - Color: Green with tiny yellow flowers.
 - Plant in early spring.
17. Desert Mallow (*Sphaeralcea ambigua*)
- Size: 0.6-1 meter tall.
 - Color: Orange to red-orange blooms.
 - Plant in early spring.
18. *Penstemon eatonii*
- Size: 0.6-1 meter tall.
 - Color: Scarlet red tubular flowers.
 - Plant in early spring.
19. Desert Zinnia (*Zinnia acerosa*)
- Size: 0.3-0.6 meters tall.
 - Color: Yellow to orange daisy-like flowers.
 - Plant in late spring.
20. Desert Bluebells (*Phacelia campanularia*)
- Size: 0.3-0.6 meters tall.
 - Color: Blue-purple bell-shaped flowers.
 - Plant in late spring.

Writing Garden

- Allocate a portion of the garden for a comfortable seating area. Options include a bench, chairs, or a cozy corner with cushions.
- Consider a focal point like a small table for writing.

Planting Zones:

- Incorporate plants that inspire creativity and provide a serene atmosphere. Consider flowering plants, herbs, or fragrant varieties.
- Use raised beds or containers if you have limited space.
- Plan for a mix of colours and textures throughout the garden.

Pathways:

- Create pathways using gravel, steppingstones, or wooden planks to guide movement within the garden.
- Make sure pathways are wide enough for easy access.

Privacy and Boundaries:

- Consider adding trellises, hedges, or decorative fencing to provide privacy and a sense of enclosure.
- These can also serve as a backdrop for your writing space.

Lighting:

- Install outdoor lighting for evening writing sessions. Options include string lights, lanterns, or solar-powered fixtures.

Water Feature:

- If space allows, a small fountain or birdbath can add a calming ambiance to your writing garden.

Personal Touches:

- Incorporate personal elements such as artwork, sculptures, or decorative items that inspire your creativity.

Plants

Lavender (*Lavandula angustifolia*)

- Size: 60cm x 60cm
- Color: Purple
- Plant in early spring.

Rosemary (*Rosmarinus officinalis*)

- Size: 90cm x 90cm
- Color: Green with blue flowers
- Plant in early spring.

Boxwood (*Buxus sempervirens*)

- Size: Various varieties, choose based on preference
- Color: Green; Plant in late winter.

Japanese Maple (*Acer palmatum*)

- Size: 2-4 meters tall
- Color: Various, including red and green; Plant in fall.

Hostas (*Hosta* spp.)

- Size: 30cm x 30cm
- Color: Varied shades of green; Plant in early spring.

Ferns (various species)

- Size: Various, choose based on preference

- Color: Green; Plant in early spring.
- Bergenia (*Bergenia cordifolia*)
- Size: 30cm x 30cm
 - Color: Pink or white flowers; Plant in early spring.
- Heuchera (*Heuchera* spp.)
- Size: 30cm x 30cm
 - Color: Various foliage colors; Plant in early spring.
- Daylilies (*Hemerocallis* spp.)
- Size: 60cm x 60cm
 - Color: Various, including yellow and orange
 - Plant in early spring.
- Sedum (*Sedum* spp.)
- Size: 15cm x 15cm
 - Color: Various, including pink and white; Plant in early spring.
- Coneflowers (*Echinacea purpurea*)
- Size: 90cm x 60cm
 - Color: Purple or pink; Plant in early spring.
- Russian Sage (*Perovskia atriplicifolia*)
- Size: 90cm x 90cm
 - Color: Silvery-gray foliage with blue flowers; Plant in early spring.
- Yarrow (*Achillea millefolium*)
- Size: 60cm x 60cm
 - Color: Various, including white and yellow; Plant in early spring.
- Hellebore (*Helleborus* spp.)
- Size: 30cm x 30cm
 - Color: Various, including white and purple; Plant in late winter.
- Siberian Iris (*Iris sibirica*)
- Size: 90cm x 90cm
 - Color: Blue or purple; Plant in early spring.
- Coral Bells (*Heuchera* spp.)
- Size: 30cm x 30cm
 - Color: Varied foliage colors
 - Plant in early spring.
- Japanese Forest Grass (*Hakonechloa macra*)
- Size: 30cm x 30cm
 - Color: Green with a graceful arching habit; Plant in early spring.
- Japanese Spurge (*Pachysandra terminalis*)
- Size: 15cm x 15cm
 - Color: Green; Plant in early spring.
- Creeping Jenny (*Lysimachia nummularia*)
- Size: Spreads, ground cover
 - Color: Bright green foliage; Plant in early spring.
- Hydrangea (*Hydrangea macrophylla*)
- Size: 1-2 meters tall
 - Color: Pink, blue, or white
 - Plant in late spring.

Therapeutic garden

Japanese Maple (*Acer palmatum*); Size: 2-3 meters tall; Color: Burgundy leaves (spring/fall); Plant in spring or fall.

Lavender (*Lavandula angustifolia*); Size: 60-90 cm tall; Color: Purple flowers (summer); Plant in spring.

Rosemary (*Rosmarinus officinalis*); Size: 90 cm - 1.2 meters tall; Color: Blue flowers (spring); Plant in spring.

Boxwood (*Buxus sempervirens*); Size: 90 cm - 1.2 meters tall; Color: Evergreen; Plant in early spring or fall.

Echinacea (*Echinacea purpurea*); Size: 60-90 cm tall; Color: Pink or purple flowers (summer); Plant in spring.

Daylilies (*Hemerocallis*); Size: 45-90 cm tall; Color: Various colors (summer); Plant in spring.

Hostas (*Hosta* spp.); Size: Varies (typically 30-60 cm tall); Color: Variegated leaves (summer); Plant in spring.

Butterfly Bush (*Buddleia davidii*); Size: 1.5 - 2 meters tall; Color: Purple or white flowers (summer); Plant in spring.

Russian Sage (*Perovskia atriplicifolia*); Size: 1-1.5 meters tall; Color: Silver-gray foliage, lavender flowers (summer); Plant in spring.

Yarrow (*Achillea millefolium*) - Size: 60-90 cm tall - Color: White, yellow, or pink flowers (summer) - Plant in spring.

Ornamental Grasses (e.g., *Miscanthus*) - Size: Varies (1-2 meters tall) - Color: Various shades (fall) - Plant in spring.

Coneflowers (*Echinacea purpurea*) - Size: 60-90 cm tall - Color: Purple or white flowers (summer) - Plant in spring.

Sedum (*Sedum* spp.) - Size: Varies (15-60 cm tall) - Color: Various (late summer/fall) - Plant in spring.

Autumn Joy (*Sedum* 'Autumn Joy') - Size: 45-60 cm tall - Color: Pink flowers turning coppery in fall (late summer) - Plant in spring.

Hellebores (*Helleborus* spp.) - Size: 30-45 cm tall - Color: Various, including shades of pink, purple, and white (late winter/early spring) - Plant in fall or early spring.

Hydrangeas (*Hydrangea* spp.) - Size: Varies (1-2 meters tall) - Color: Blue, pink, or white (summer) - Plant in spring.

Creeping Jenny (*Lysimachia nummularia*) - Size: Groundcover - Color: Yellow-green foliage (spring/summer) - Plant in spring.

Stonecrop (*Sedum ternatum*) - Size: Groundcover - Color: Green foliage, white flowers (spring) - Plant in spring.

Heuchera (*Heuchera* spp.) - Size: 30-45 cm tall - Color: Various foliage colors, some with pink or white flowers (spring) - Plant in spring.










Japanese Forest Grass (*Hakonechloa macra*) - Size: 30-45 cm tall - Color: Golden-yellow foliage (summer/fall) - Plant in spring.

Types of Plants

The following were taken from the brochure prepared for Oh Dureze

Plan d'aménagement paysager et écologique – Domaine du Bien être et de la Nature

STRATE ARBOREE COUPE VENT

		
Bouleau <i>Betula pendula</i>	Charme <i>Carpinus betulus</i>	Erable champêtre <i>Acer campestre</i>
		
Laurier sauce <i>Laurus nobilis</i>	Févier d'Amérique <i>Gleditsia triacanthos</i>	Chêne vert <i>Quercus ilex</i>
		
Noyer <i>Juglans regia</i>	Pin parasol <i>Pinus pinea</i>	Micocoulier <i>Celtis</i>

2.4. Matériaux privilégiés

Les collecteurs d'eaux servent de barrières physiques sans impliquer de clôtures. portails en bois servent de passages fermés pour les lieux d'activités, de portails.

Des bancs avec des troncs d'arbres pourront être disposés à divers endroits du Do rondins de bois structureront les cheminements pour les parties escarpées.

Une clôture grillage vert, transparente dans la nature, sera utilisée pour les pa protégées (zone nourricière et verger avec les animaux).

Des stabulations en bois ouvertes pour les chevaux seront installées, Elles pourront lorsqu'elles ne sont pas utilisées (abris de rangements, zone de méditation, exposition réservé aux chevaux sera délimités par des barrières avec deux lisses.

La pierre mise en lumière, et des murets en pierres sèches seront construits pour cré

Par SoluTerre



HAIES CHAMPETRES



Amélanchier commun
Amelanchier ovalis



Aronia
Aronia melanocarpa



Aubépine
Crataegus oxyacantha



Cornouiller
Cornus



Noisetier
Corylus avellana



Azerolier
Crataegus azarolus



Cerisier
Prunus avium



Prunellier
Prunus spinosa



Saule marsault
Salix caprea

Plan d'aménagement paysager et écologique – Domaine du Bien être et de la Nat



Amandier
Prunus dulcis



Arbousier
Arbutus unedo



Figuier
Ficus carica



Cerisier
Prunus avium



Pommier
Malus communis



Néflier commun
Mespilus germanica



Prunier d'Europe
Prunus domestica



Pêcher
Prunus persica



Poirier
Pyrus communis

LA ZONE NOURRICIERE : VERGER PARTAGE / JARDIN PARTAGE / MARAICH,
jardin partagé, zone de production et de rencontres, espace où se conjuguent
ier, la détente et la pédagogie.



Plan d'aménagement paysager et écologique – Domaine du Bien être et de la Nature

PLANTES HERBACÉES



Safran
Crocus sativa



Garance des teinturiers
Rubia tinctorum



Aspérule
Galium odoratum



Camomille
Chamaemelum nobile



Renouée des teinturiers
Persicaria tinctoria



Morelle à grappes
Phytolacca americana



Pastel de teinturiers
Isatis tinctorialis



Tussilage
Tussilago farfara



Lin
Linum usitatissimum



Chanvre textile
Cannabis sativa



Ortie
Urtica dioica

Figure 11 : Palette végétale pour

ARBUSTES



Héné
Lawsonia inermis



Indigotier
Indigofera tinctoria



Genêt des teinturiers
Genista tinctorum

ARBRES



Noyer
Juglans regia



Acacia
Persicaria tinctoria



Sumac
Rhus typhina

Plants Scanned onto PictureThis from Loire Valley:

- African marigold
- Angelonia
- Black cosmos
- Black cosmos
- Black eyed susan
- Black locust
- Blue anise sage
- Butterfly bush
- Canada goldenrod
- Candle larkspur
- Caucasian fir
- China aster
- Chinese silver grass
- Cider gum
- Cigartree
- Common blanketflower
- Common box
- Common evening primrose
- Common hollyhock
- Common lilac
- Common sunflower
- Common zinnia
- Crape myrtle
- Cup plant
- Dwarf elder
- Feathertop
- Garden dahlia
- Garden nasturtium
- Garden phlox
- Garden verbena
- Gladiolus
- Globe artichoke
- Glossy abelia
- Hubricht's bluestar
- Hydrangea
- Indian Shot
- Japanese angelica tree
- Large leaved lime
- Laurustinus
- Lemon
- Lindheimer's beeblossom
- New guinea impatiens
- Orange daylily
- Panicle hydrangea
- Pearly everlasting
- Princess tree

- Purple coneflower
- Purple willow
- Purpletop vervain
- Quack grass
- Red amaranth
- Red hot poker
- Rose of Sharon
- Rosemary
- Rough horsetail
- Russian sage
- Scarlet Firethorn (Pyracantha)
- Scarlet sage
- Showy stonecrop
- Silver fir
- Slash pine
- Southern globethistle
- Sweet alyssum
- Sweetgum
- Tea rose
- Tea rose
- Texas bluebell
- True indigo
- Trumpet creeper
- Wine grape

Perennials: Perennials divided by colour and size

Red/Orange Perennials:

- Red Hot Poker (Tall)
- Crocosmia (Medium)
- Helenium (Tall)
- Daylily 'Red Magic' (Medium)
- Geum 'Totally Tangerine' (Medium)

Yellow/Gold Perennials:

- Coreopsis 'Moonbeam' (Medium)
- Rudbeckia 'Goldsturm' (Medium)

- Heliopsis 'Summer Sun' (Tall)
- Echinacea 'Yellow Coneflower' (Medium)
- Ligularia 'The Rocket' (Tall)

Pink Perennials:

- 11. Peony (Medium)
- 12. Astilbe 'Fanal' (Short)
- 13. Phlox 'Bright Eyes' (Medium)
- 14. Dianthus 'Firewitch' (Short)
- 15. Campanula 'Pink Octopus' (Medium)

Purple/Blue Perennials:

- 16. Salvia 'May Night' (Medium)
- 17. Russian Sage (Tall)
- 18. Baptisia 'Purple Smoke' (Medium)
- 19. Delphinium (Tall)
- 20. Nepeta 'Walker's Low' (Medium)

White Perennials:

- 21. Shasta Daisy (Medium)
- 22. Hosta 'White Feather' (Medium)
- 23. Echinacea 'White Swan' (Medium)
- 24. Astilbe 'Bridal Veil' (Short)
- 25. Candytuft (Short)

Tall Perennials (over 3 feet):

- 26. Joe Pye Weed
- 27. Monarda 'Jacob Cline'
- 28. Tall Phlox
- 29. Veronicastrum virginicum
- 30. Eupatorium maculatum 'Gateway'

Medium Perennials (1.5 to 3 feet):

- 31. Penstemon 'Husker Red'
- 32. Gaillardia 'Arizona Sun'
- 33. Yarrow 'Coronation Gold'
- 34. Heuchera 'Palace Purple'
- 35. Sedum 'Autumn Joy'

Short Perennials (under 1.5 feet):

- 36. Aubrieta 'Purple Gem'
- 37. Sedum 'Angelina'
- 38. Dianthus 'Tiny Rubies'
- 39. Geranium sanguineum
- 40. Hens and Chicks (Sempervivum)

Trees:

Creating Habitats:

Animals

- Mound
- Compost heap
- Log piles

Insects

- Insect houses
- Compost heap
- Log piles

Bats

- Bat boxes

Birds

- Bird boxes – 28/ 32mm

Infrastructure

- Tool shed
- Lawnmower
- Chainsaw
- Mulcher
- Water tank

Pond?